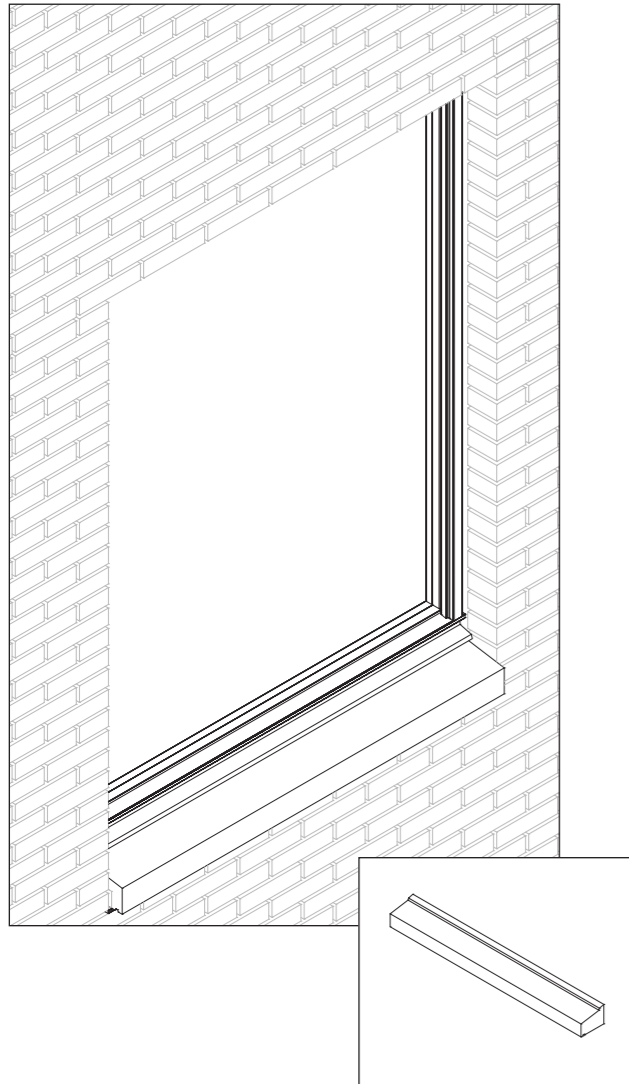
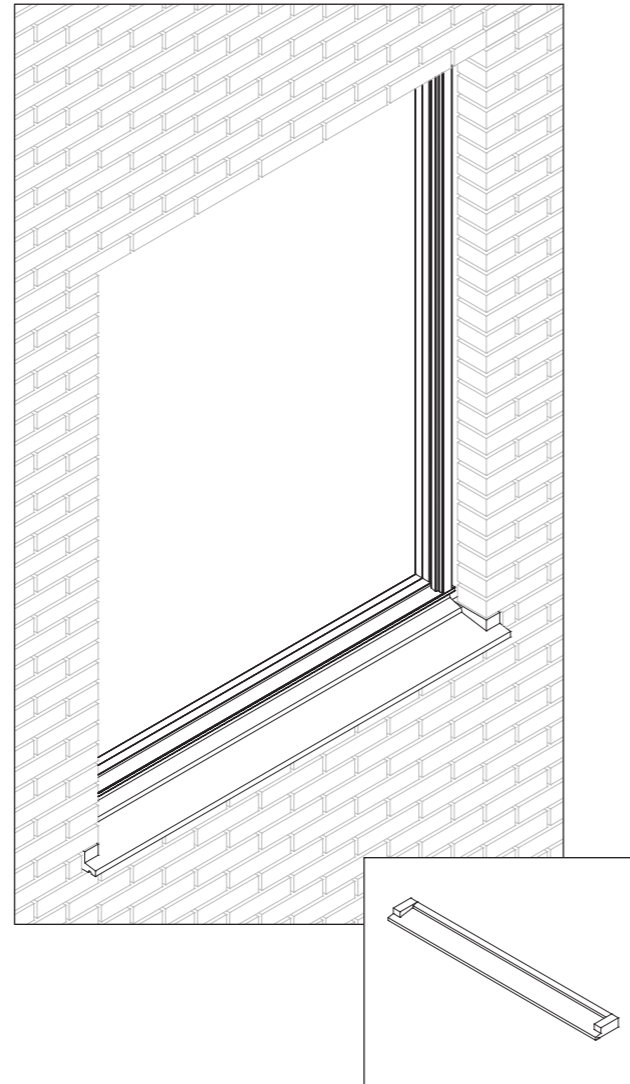


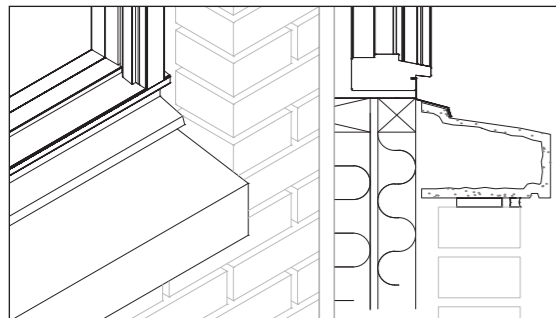
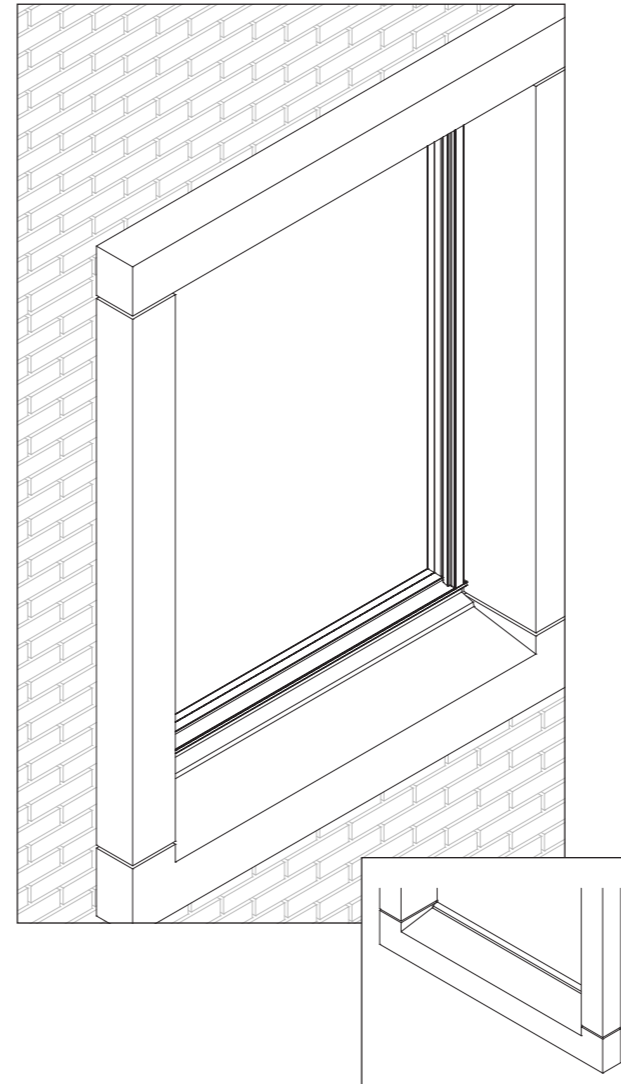
MOUNTED IN BRICK WALLS



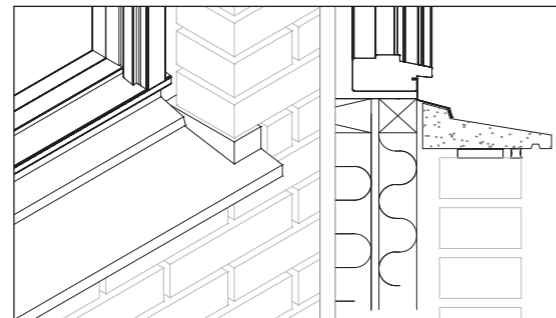
EMBEDDED INTO BRICK WALL



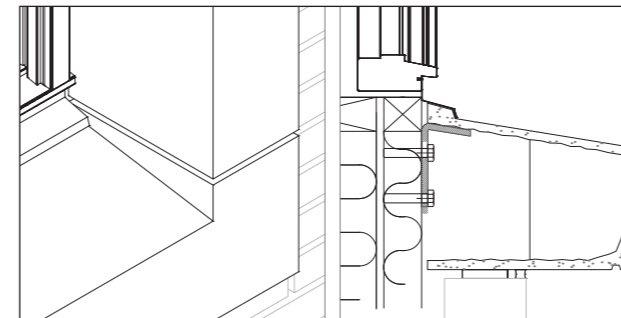
COMBINED WITH WINDOW ORNAMENTS



Sills in length as windows.
Works for all types of facades.



Sills with greater XXX properties.



Sills with greater ornamental properties.

SILLS

GRC sills help give the façade a coherent impression and the transition between window and facade can work architecturally. With decorative elements in connection with the sills, windows can be highlighted. The depth, geometry etc can be varied as desired. In a façade the sills help to emphasize the craftsmanship in the masonry and in other facades it is a good transition between the window and the facade.

GRC sills are a good solution both technically and economically with almost infinite durability. GRC sills does not rot, does not break, does not burn and requires no technical maintenance. BB fiberbeton has no standard solutions, - all projects are solved individually.

Sills with more decorative design can be executed according to the project, where all measures are in play: height, widths, depths and angle. It is possible to give the building its own expression.

• GEOMETRY

Sills are delivered on measure. The greatest length is dependent on the selected profile, insofar as it relates to stiffness in the profile and the weight of the element. Typical maximum lengths are 2200 mm. At larger lengths, the elements are divided into several smaller lengths. Elements in fiber concrete must be able to move approx. 1 mm / m and we recommend that joints are 10-12 mm to allow for tolerances and movements.

Sills must have a drip groove underneath and with a distance of minimum 40 mm from the facade. Equally, it is a technically good solution to make ends at the ends which ensures that the water runs the right way. Fall on top should be a minimum of 15 mm / m - the more the better.

Sills from BB fiberbeton are supplied with surfaces that are dense and virtually pore-free. The elements are given a water and dirt repellent surface treatment.

• MOUNTING

Sills must be mounted so that they can move freely in the longitudinal direction. This means that joints at the ends must be elastic. The sills can be clamped up and fitted with elastic adhesives, laid on weak mortar which in turn is separated from the wall with cardboard or the like.

We always recommend using elastic joints. Incidentally, it is recommended to install according to the instructions of the masonry profession.